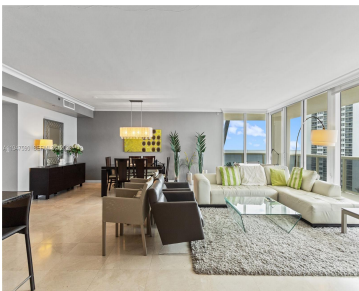
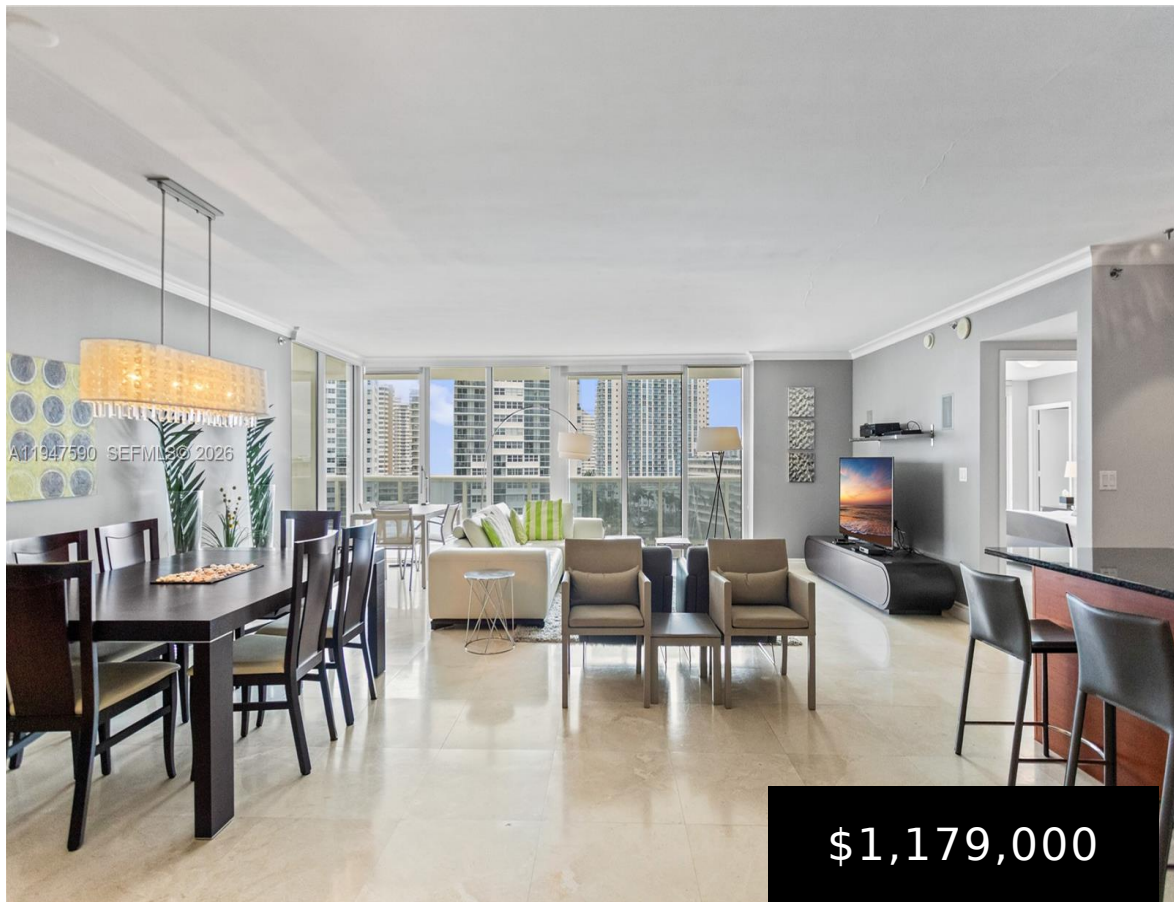


805, 1850, OCEAN DR, HALLANDALE BEACH, FL, 33009  
<https://beachclubhallandale.org>



THE BEACH CLUB CONDO UNIT 805 PER CDO CIN# 104885375 \*\*GREAT BUY ON THIS OVERSIZE AND SPACIOUS OPEN FLOORPLAN 2 BEDROOM OFFERING UNOBSTRUCTED AND INCREDIBLE SOUTHERN EXPOSURE OF THE OCEAN, CITY AND INTRACOASTAL VIEWS.\*\* SHOWS GREAT AS THIS ONE WAS NEVER RENTED AND ONLY USED A FEW MONTHS OUT OF THE YEAR AS A SECOND [...]

- 2 beds
- 2 baths
- Condominium
- Residential
- Active
- 1782 sq ft

## Basics



**Category:** Residential

**Status:** Active

**Bathrooms:** 2 baths

**Floors:** 44 floors

**Year built:** 2006

**Subdivision Name:** BEACH CLUB CONDO

**Type:** Condominium

**Bedrooms:** 2 beds

**Half baths:** 0 half baths

**Area:** 1782 sq ft

**View:** Intercoastal,Ocean

**County:** Broward

---

## Building Details

**Architectural Style:** HighRise

**Covered Spaces:** 1

**Floor covering:** CeramicTile

**Construction Materials:** Block

**Garage Spaces:** 1

---

## Amenities & Features

**Pool Features:** Heated

**Security Features:** LobbySecured,SecurityGuard

**Association Amenities:**  
Clubhouse,FitnessCenter,Pool,Elevators

**Cooling:** CentralAir,CeilingFans

**Heating:** Central

**Appliances:**  
Dryer,Dishwasher,ElectricRange,Disposal,Refrigerator,Washer

**Parking Features:**  
Covered,OneSpace,Valet

**Patio & Porch Features:**  
Balcony,Open

**Waterfront Features:**  
OceanAccess,OceanFront

**Exterior Features:** Balcony

**Interior Features:**  
BedroomOnMainLevel,WalkInClosets

---

## Nearby Schools

**High School:** Hallandale High





## Expenses, Fees & Taxes

**Association Fee:** \$1,834

**Tax Annual Amount:** \$18,861

**Tax Year:** 2025



## Miscellaneous

**Association Fee Frequency:** Monthly **List Office Name:** Coldwell Banker Realty

**Listing Terms:** Cash,Conventional

