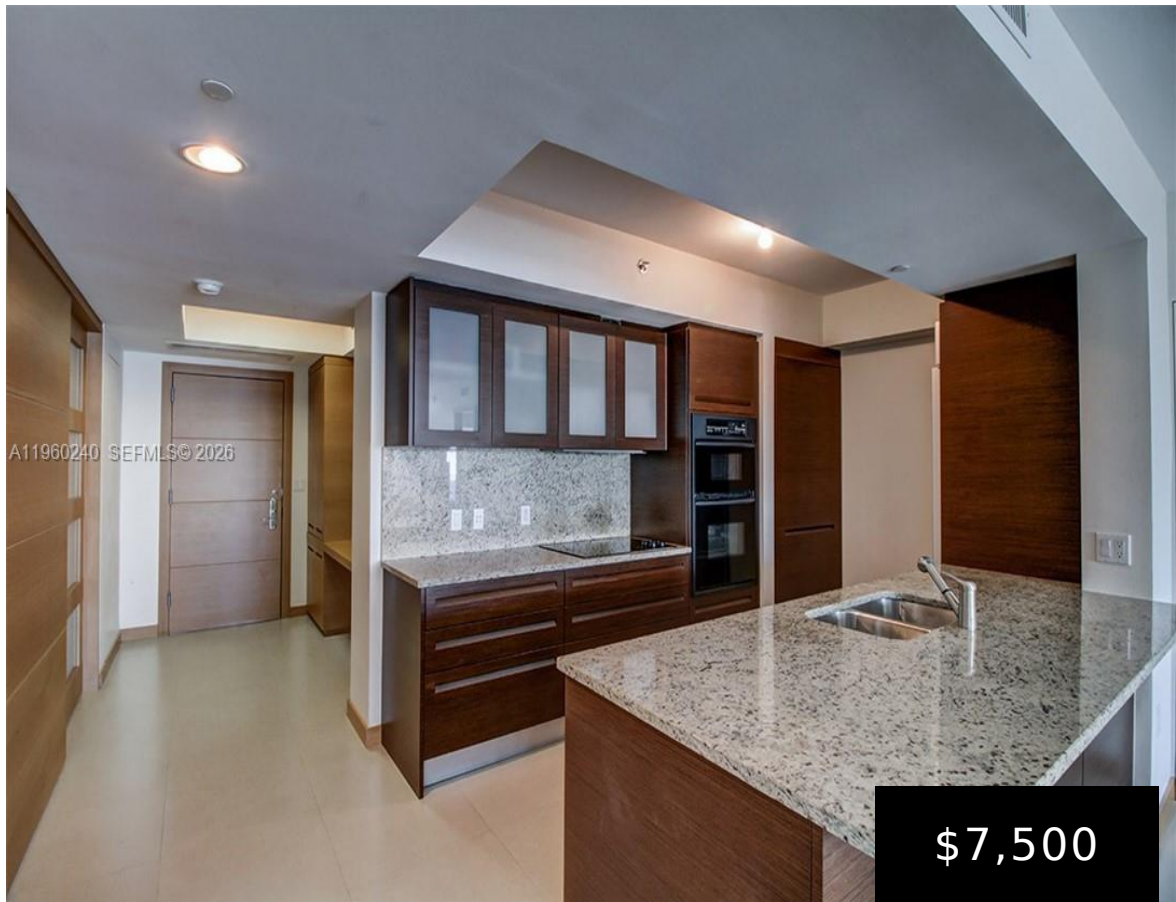


4404, 1830, OCEAN DR, HALLANDALE BEACH, FL, 33009
<https://beachclubhallandale.org>



\$7,500



BEACH CLUB TWO UNIT 4404 Ocean Front, bright and spectacular fully furnished unit, two bedrooms + den & 3 baths with marble & wood floors, completely renovated spectacular SE panoramic ocean views from the 44th floor, all the way to downtown Miami & South Beach. Resort-style amenities, full-service spa, 50,000 sq ft fitness center overlook the [...]

- 3 beds
- 3 baths
- Condominium
- Residential Lease
- Active
- 1675 sq ft

Basics



Category: ResidentialLease

Status: Active

Bathrooms: 3 baths

Area: 1675 sq ft

View: Ocean

County: Broward

Type: Condominium

Bedrooms: 3 beds

Half baths: 0 half baths

Year built: 2006

Subdivision Name: Beach Club Two

Building Details

Water Source: Public

Sewer: PublicSewer

Covered Spaces: 1

Floor covering: Marble

Architectural Style: HighRise

Construction Materials: Block

Garage Spaces: 1

Amenities & Features

Pool Features: Heated,InGround,Pool,Community

Security Features: BuildingSecurity,KeyCardEntry,LobbySecured,SmokeDetectors

Spa Features: HotTub

Association Amenities: ControlledAccess,Elevators,FitnessCenter,Management,Pool

Utilities: CableAvailable

Cooling: CentralAir,Electric

Furnished: Furnished

Interior Features: BedroomOnMainLevel,FirstFloorEntry,LivingDiningRoom

Parking Features: Assigned,Attached,Garage,OneSpace,Valet

Patio & Porch Features: Balcony,Open

Roof: Concrete

Waterfront Features: OceanFront

Window Features: Sliding,ImpactGlass

Exterior Features: Balcony,SecurityHighImpactDoors

Heating: Central,Electric

Appliances: Dryer,Dishwasher,ElectricRange,Disposal,IceMaker,Microwave,Refrigerator,Washer

Nearby Schools

Middle Or Junior School: Gulfstream

High School: Hallandale High

Elementary School: Hallandale Elem

Miscellaneous



List Office Name: Cervera Real Estate Inc
Community Features: Fitness,PropertyManagerOnSite,Pool

Direction Faces: Southeast
Rent Includes: AssociationDues,Pool,Sewer,TrashCollection,CableTv,Water

