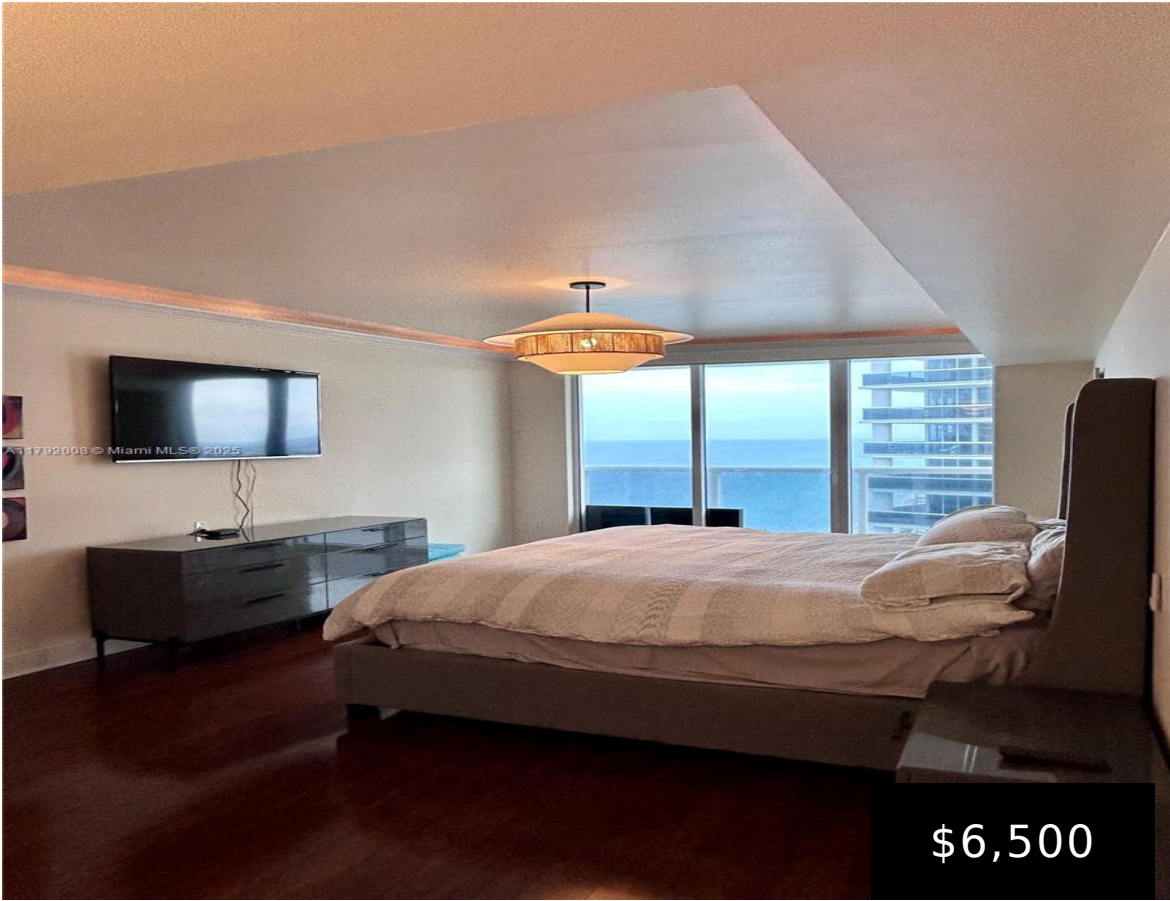


4106, 1830, OCEAN DR, HALLANDALE BEACH, FL, 33009

<https://beachclubhallandale.org>



\$6,500



BEACH CLUB TWO CONDO UNIT 4106 PER CDO CIN# 106268982 Available now Marvelous ocean, intercostal and city views from every bedroom and living room, wrapped around 500 sq feet balcony, full equipped unit king bed in master and queen bed in guest bedroom 2 full bathrooms and massive comfortable pull out couch in living room, [...]

- 2 beds
- 2 baths
- Condominium
- ResidentialLease
- Active
- 1458 sq ft

Basics



Category: ResidentialLease

Type: Condominium

Status: Active

Bedrooms: 2 beds

Bathrooms: 2 baths

Half baths: 0 half baths

Area: 1458 sq ft

Year built: 2006

View: Intercoastal,Ocean,Water

Subdivision Name: BEACH CLUB TWO CONDO

County: Broward

Building Details

Architectural Style: HighRise

Covered Spaces: 1

Garage Spaces: 1

Floor covering: Laminate, Marble, Tile

Amenities & Features

Pool Features:

AboveGround,Community,Heated,Pool

Parking Features: Assigned,Valet

Spa Features: HotTub

Association Amenities:

Elevators,FitnessCenter,Maintenance,Sauna,SpaHotTub,Security

Waterfront Features:

IntracoastalAccess,OceanFront

Furnished: Furnished

Interior Features: Bar

Miscellaneous

List Office Name: Silverleaf Realty Group

Community Features: Pool

Direction Faces: Southeast

Rent Includes: HotWater,Sewer,TrashCollection,Water

