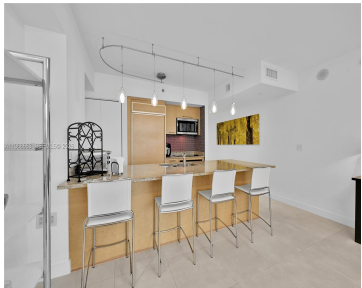
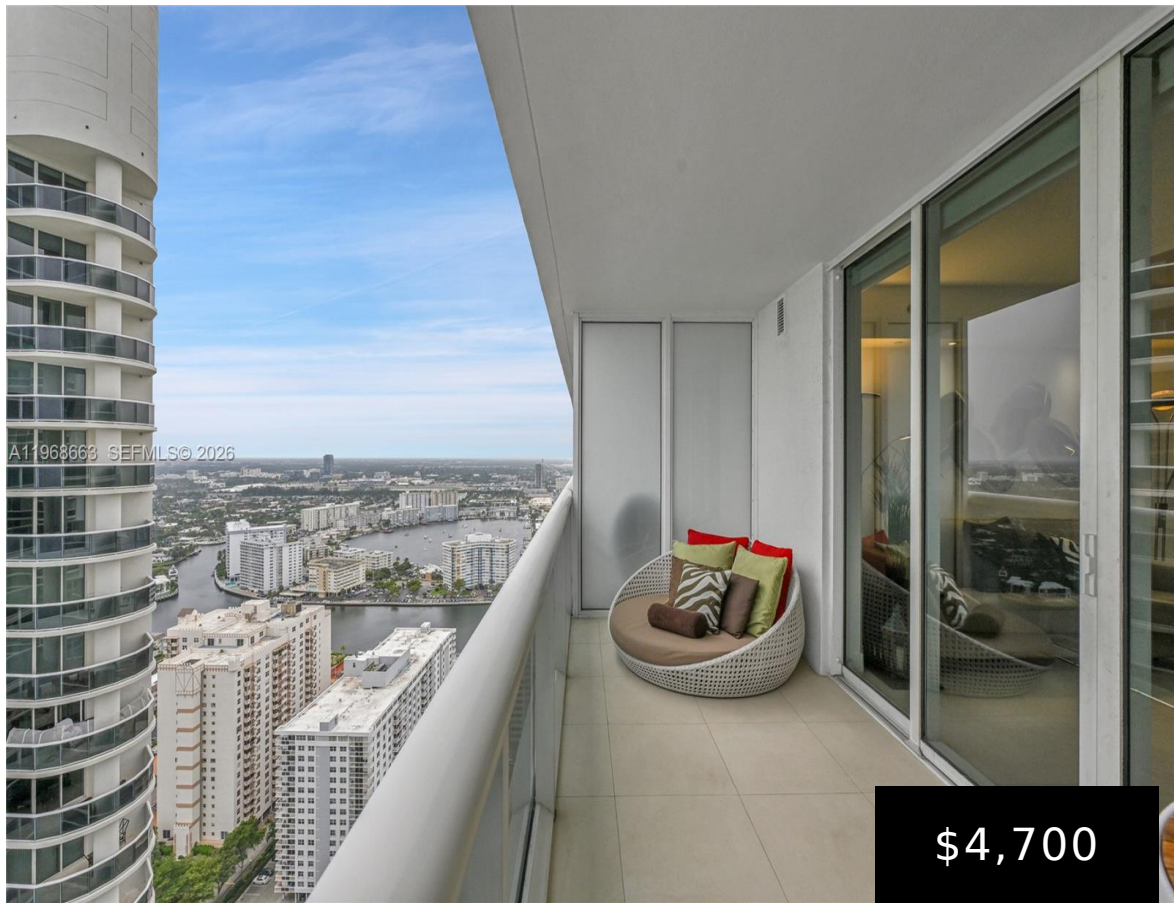


4005, 1830, OCEAN DR, HALLANDALE BEACH, FL, 33009

<https://beachclubhallandale.org>



BEACH CLUB TWO CONDO UNIT 4005 PER CDO CIN# 106268982 Beautifully furnished studio residence on the 40th floor featuring breathtaking southeast ocean views. This elegant unit offers a queen-size bed and sofa bed. The European-style kitchen is appointed with granite countertops and sleek finishes. Enjoy resort-style living with five heated pools, a 50,000 sq. ft. [...]

- 1 bed
- 1 bath
- Condominium
- ResidentialLease
- Active
- 811 sq ft

Basics

Category: ResidentialLease

Status: Active

Bathrooms: 1 bath

Area: 811 sq ft

Subdivision Name: BEACH CLUB TWO CONDO

Type: Condominium

Bedrooms: 1 bed

Half baths: 0 half baths

Year built: 2007

County: Broward



Building Details

Water Source: Public

Sewer: PublicSewer

Covered Spaces: 1

Architectural Style: HighRise

Construction Materials: Block

Garage Spaces: 1

Amenities & Features

Pool Features: Heated,InGround,Pool,Community

Security Features:
BuildingSecurity,KeyCardEntry,LobbySecured

Spa Features: HotTub

Association Amenities:
FitnessCenter,Management,Pool,Sauna

Utilities: CableAvailable

Cooling: CentralAir

Furnished: Furnished

Interior Features:
BedroomOnMainLevel,FirstFloorEntry,LivingDiningRoom

Parking Features: Assigned,OneSpace,Valet

Patio & Porch Features: Balcony,Open

Roof: Concrete

Waterfront Features: Bayfront

Window Features: Sliding,ImpactGlass

Exterior Features: Balcony,SecurityHighImpactDoors

Heating: Central

Appliances:
Dryer,Dishwasher,ElectricRange,ElectricWaterHeater,Disposal,Microwave,Refrigerator

Nearby Schools

Middle Or Junior School: Gulfstream

Elementary School: Hallandale Elem

High School: Hallandale High

Miscellaneous

List Office Name: **Community Features:** Fitness,PropertyManagerOnSite,Pool

Cervera
Real Estate
Inc

Direction Faces: **Rent Includes:**
Southeast AssociationDues,Gardener,Internet,Pool,Sewer,TrashCollection,CableTv,Water

