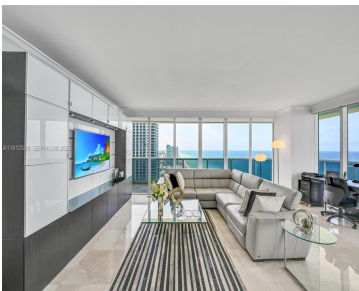
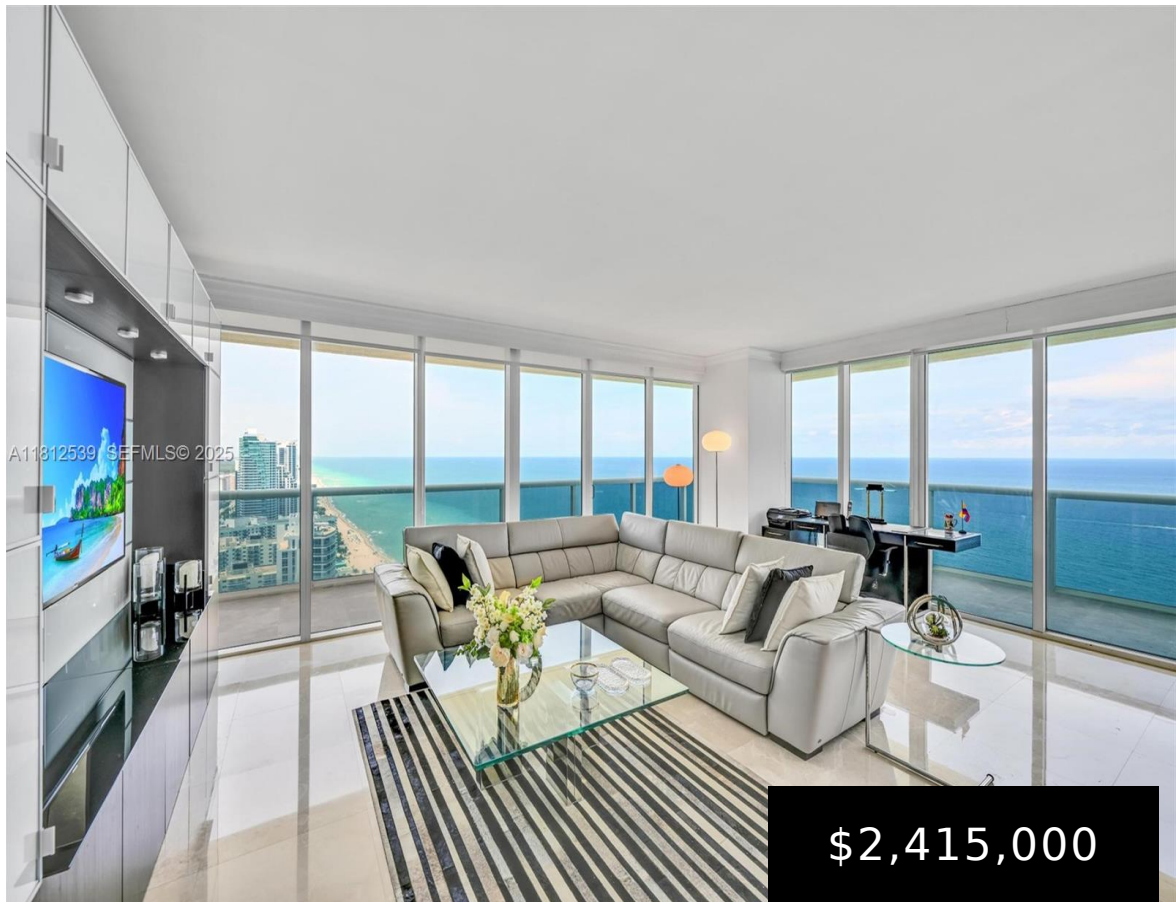


HALLANDALE BEACH, FL, HALLANDALE BEACH

<https://beachclubhallandale.org>



BEACH CLUB TWO CONDO UNIT 3801 PER CDO CIN# 106268982 Spectacular NE corner unit on the 38th floor with breathtaking direct ocean, Intracoastal & skyline views. This 3 bed / 3 bath residence offers 2,065 sq. ft. of interior space plus a 565 sq. ft. wraparound balcony. Features include marble floors throughout, California closets, and [...]

- 3 beds
- 3 baths
- Condominium
- Residential
- Active
- 2065 sq ft

Basics



Category: Residential

Status: Active

Bathrooms: 3 baths

Floors: 51 floors

Year built: 2006

Subdivision Name: BEACH CLUB TWO CONDO

Type: Condominium

Bedrooms: 3 beds

Half baths: 0 half baths

Area: 2065 sq ft

View: Ocean,Pool

County: Broward

Building Details

Construction Materials: Block

Garage Spaces: 1

Covered Spaces: 1

Floor covering: Marble

Amenities & Features

Pool Features: Association,Heated

Security Features: FireAlarm,KeyCardEntry,LobbySecured,SmokeDetectors

Association Amenities: FitnessCenter,Pool,Sauna,SpaHotTub,Elevators

Window Features: ImpactGlass

Exterior Features: Balcony

Interior Features: BedroomOnMainLevel,LivingDiningRoom,SeparateShower,Bar

Appliances: BuiltInOven,Dishwasher,ElectricWaterHeater,Disposal,Refrigerator

Parking Features: Assigned,Valet

Patio & Porch Features: Balcony,Open

Waterfront Features: OceanAccess

Cooling: CentralAir,Electric

Heating: Central,Electric

Laundry Features: WasherHookup,DryerHookup

Nearby Schools

Middle Or Junior School: Gulfstream

High School: Hallandale High

Elementary School: Hallandale Elem





Expenses, Fees & Taxes

Association Fee: \$2,632

Tax Annual Amount: \$34,264

Tax Year: 2024



Miscellaneous

Association Fee Frequency: Monthly

List Office Name: Cervera Real Estate Inc

Listing Terms: Conventional

