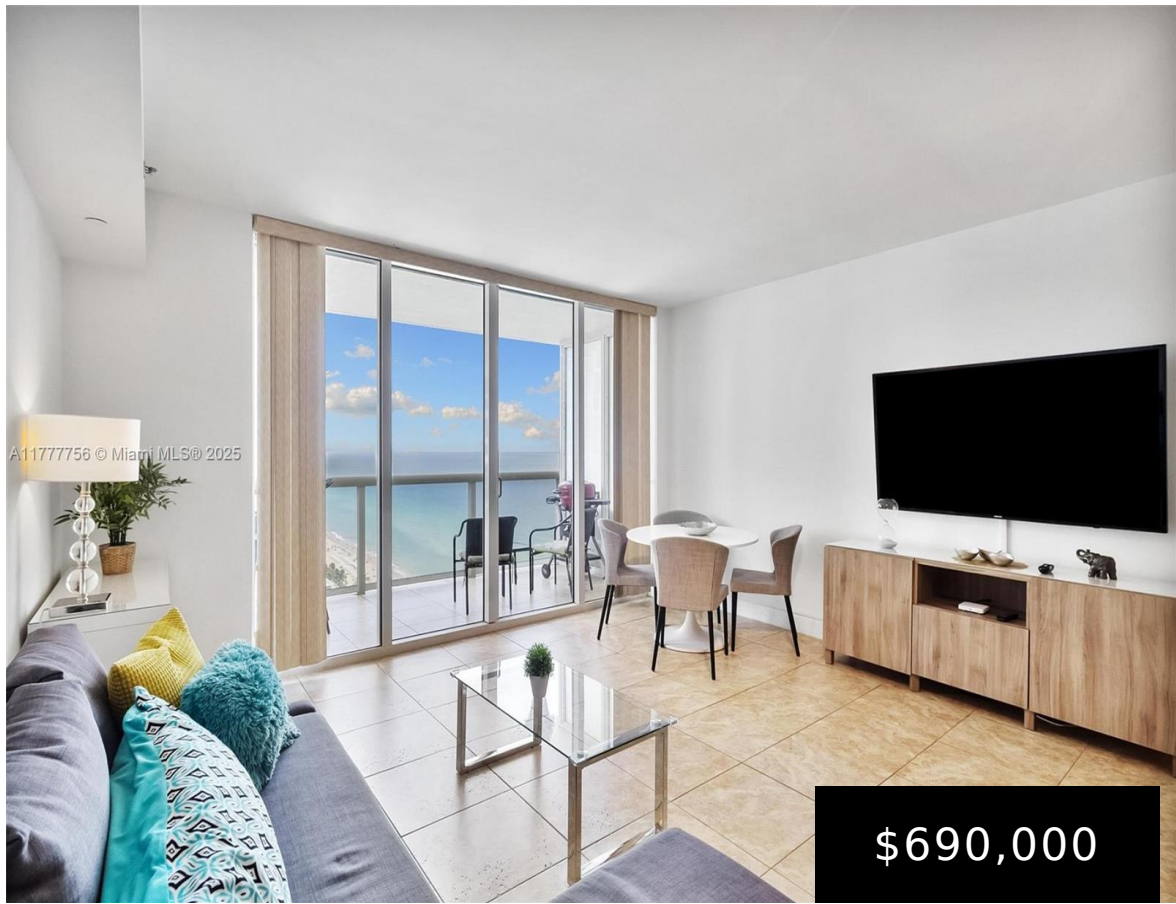


HALLANDALE BEACH, FL, HALLANDALE BEACH

<https://beachclubhallandale.org>



BEACH CLUB TWO UNIT 2409 Beautiful fully furnished studio with a queen size bed in the enclosed den and a sofa bed in the living room. Model G with NE exposure and gorgeous ocean view. You will also enjoy your unit with European style kitchen, gorgeous granite countertops & kitchen appliance. Condominium includes amenities such [...]

- 1 bed
- 1 bath
- Condominium
- Residential
- Active
- 844 sq ft

Basics



Category: Residential

Status: Active

Bathrooms: 1 bath

Floors: 51 floors

Year built: 2006

Subdivision Name: BEACH CLUB TWO

Type: Condominium

Bedrooms: 1 bed

Half baths: 0 half baths

Area: 844 sq ft

View: Ocean

County: Broward

Building Details

Construction Materials: Block

Garage Spaces: 1

Covered Spaces: 1

Floor covering: Marble

Amenities & Features

Parking Features:
Assigned,Attached,Garage,OneSpace,Valet

Patio & Porch Features: Balcony,Open

Waterfront Features: OceanFront

Cooling: CentralAir,Electric

Furnished: Furnished

Interior Features:
BedroomOnMainLevel,FirstFloorEntry,LivingDiningRoom,Bar

Security Features:
SecurityGuard,FireSprinklerSystem,SmokeDetectors

Association Amenities:
FitnessCenter,Sauna,SpaHotTub,Elevators

Window Features: Sliding,ImpactGlass

Exterior Features: Balcony,SecurityHighImpactDoors

Heating: Central,Electric

Appliances:
Dryer,Dishwasher,ElectricRange,Microwave,Refrigerator,Washer

Nearby Schools

Middle Or Junior School: Gulfstream

High School: Hallandale High

Elementary School: Hallandale Elem

Expenses, Fees & Taxes

Association Fee: \$1,057

Tax Year: 2024

Tax Annual Amount: \$10,437





Miscellaneous

Association Fee Frequency: Monthly **List Office Name:** Cervera Real Estate Inc
Listing Terms: Cash,Conventional **Direction Faces:** Northeast

