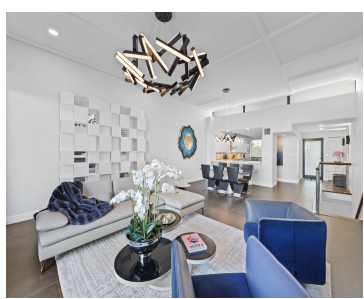
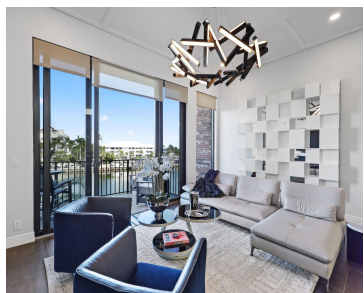
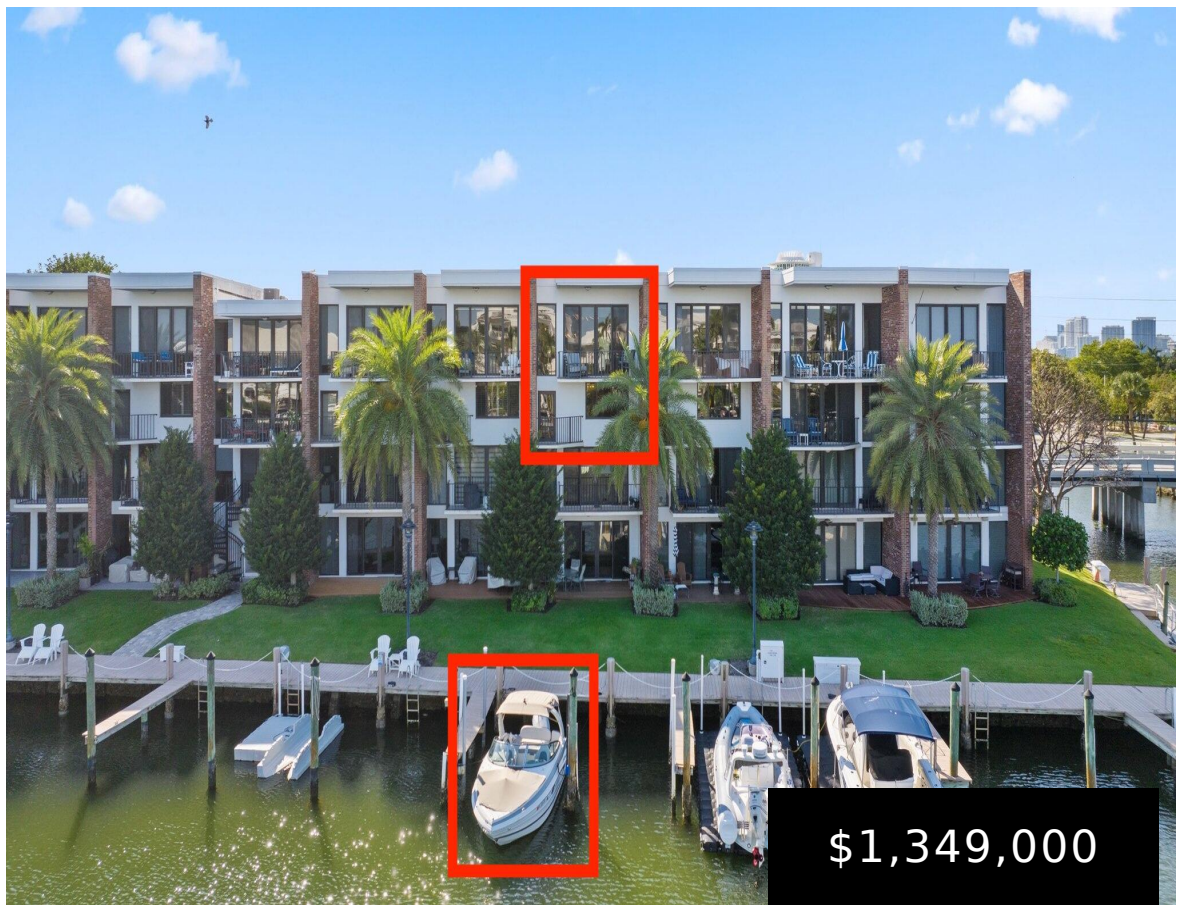


# FL, US, FORT LAUDERDALE

<https://beachclubhallandale.org>



TOWNHOUSES AT HARBOR BEACH CONDO UNIT B-2 PER CDO BK/PG: 8160/1 A MUST SEE! Every box checked in this tastefully renovated and extra large elevated townhouse with PRIVATE DOCKAGE in Harbor Beach! Vaulted ceilings and a wall of windows showcase scenic views of Lake Mayan, the ocean and cruise ships passing by. Premium tile flooring, [...]

- 2 beds
- 3 baths
- Condominium
- Residential
- Active
- 1790 sq ft

## Basics



**Category:** Residential

**Type:** Condominium

**Status:** Active

**Bedrooms:** 2 beds

**Bathrooms:** 3 baths

**Half baths:** 1 half bath

**Total rooms:** 3

**Floors:** 4, 4 floors

**Area:** 1790 sq ft

**Year built:** 1979

**View:** Canal,Ocean,Water

**Subdivision Name:** TOWNHOUSES AT HARBOR BEACH

**County:** Broward

---

## Building Details

**Building Name:** Townhouses at Harbor Beach

**Structure Type:** MultiFamily

**Water Source:** Public

**Architectural Style:**  
ContemporaryModern,TwoStory

**Sewer:** NotConnectedAtLot,PublicSewer,Other

**Construction Materials:** Block

**Foundation Details:** Slab

**Levels:** Two

**Floor covering:** CeramicTile

---

## Amenities & Features

**Pool Features:** None,Association,Community,Heated

**Security Features:** Intercom,LobbySecured,PhoneEntry,SecurityLights,SecuritySystem

**Parking Total:** 1

**Association Amenities:** BoatDock,Pool,Storage,Elevators

**Utilities:** CableAvailable,ElectricityAvailable,WaterAvailable,SewerAvailable

**Cooling:** CentralAir,Electric

**Furnished:** Negotiable

**Interior Features:**

BreakfastBar,BreakfastArea,ClosetCabinetry,DualSinks,LivingDiningRoom,MainLivingAreaEntryLevel,VaultedCeilings,WalkInClosets,Elevator

**Parking Features:** Assigned,Guest,OneSpace

**Patio & Porch Features:** Balcony,Open

**Roof:** Flat,Tile

**Waterfront Features:**

CanalAccess,CanalFront,FixedBridge,IntersectingCanal,NavigableWater,OceanAccess,Seawall

**Window Features:** TintedWindows,ImpactGlass

**Exterior Features:** Balcony

**Heating:** Central,Electric

**Appliances:**

BuiltInOven,Dryer,Dishwasher,ElectricWaterHeater,Disposal,Microwave,Refrigerator,SelfCleaningOven,Washer

---

## Nearby Schools

**Middle Or Junior School:** Sunrise

**Elementary School:** Harbordale

**High School:** Fort Lauderdale

---

## Expenses, Fees & Taxes



**Association Fee:** \$938

**Tax Annual Amount:** \$18,011

**Tax Year:** 2025

---

## Miscellaneous

**Association Fee Frequency:**  
Monthly

**List Office Name:** Compass Florida, LLC

**Listing Terms:**  
Cash,Conventional

**Community Features:**  
BoatFacilities,HomeOwnersAssociation,Pool

**Direction Faces:** East

