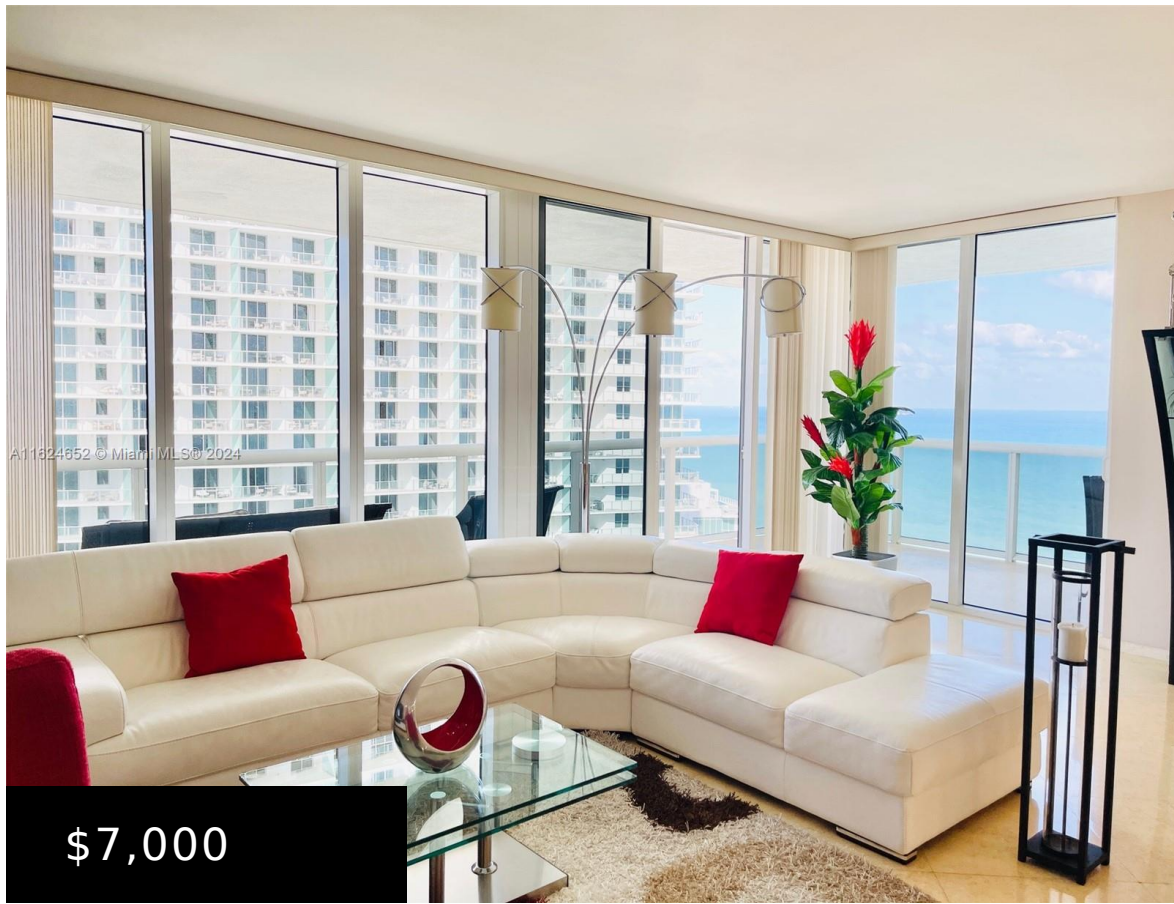


# 3410, 1800, OCEAN DR, HALLANDALE BEACH, FL, 33009

<https://beachclubhallandale.org>



BEACH CLUB THREE CONDO UNIT 3410 PER CDO CIN# 106720024 WELCOME TO HALLANDALE BEACH CLUB SITUATED ON ACRES OF ENDLESS BLUE WATERS AND SAND. THIS BEACHFRONT 2 BEDROOM/2BATHS CONDO HAS THE FEEL OF A HOME IN THE SKY, THE 1,800 SQ. FT. SPACE IS SURROUNDED BY BREATHTAKING WATER VIEWS INCLUDING DIRECT OCEAN AND INTRACOASTAL / [...]

- 2 beds
- 2 baths
- Condominium
- ResidentialLease
- Active
- 1782 sq ft

## Basics



**Category:** ResidentialLease

**Status:** Active

**Bathrooms:** 2 baths

**Floors:** 1 floor

**Year built:** 2006

**Subdivision Name:** BEACH CLUB THREE

**Lease Term:** LessThan1Year

**Type:** Condominium

**Bedrooms:** 2 beds

**Half baths:** 0 half baths

**Area:** 1782 sq ft

**View:** Intercoastal,Ocean,Water

**County:** Broward

---

## Building Details

**Water Source:** Public

**Lot Features:** LessThanQuarterAcre

**Construction Materials:** Block

**Garage Spaces:** 2

**Floor covering:** Marble

**Architectural Style:** HighRise

**Sewer:** PublicSewer

**Covered Spaces:** 2

**Levels:** One

---

### Amenities & Features

**Pool Features:** InGround,Pool,Community

**Security Features:** BuildingSecurity,KeyCardEntry,LobbySecured,SmokeDetectors

**Spa Features:** Community

**Waterfront Features:** OceanAccess,OceanFront

**Window Features:** Blinds,ImpactGlass

**Exterior Features:** Balcony,SecurityHighImpactDoors

**Heating:** Central

**Parking Features:** Assigned,Detached,Garage,Guest,Valet

**Patio & Porch Features:** Balcony,Open

**Association Amenities:** Clubhouse,Elevators,FitnessCenter,Pool,Sauna,SpaHotTub

**Utilities:** CableAvailable

**Cooling:** CentralAir

**Furnished:** Furnished

**Interior Features:**

BuiltInFeatures,BedroomOnMainLevel,BreakfastArea,DiningArea,SeparateFormalDiningRoom,EatinKitchen,FirstFloorEntry,HighCeilings,KitchenIsland,WalkInClosets,Elevator

**Appliances:**

Dryer,Dishwasher,ElectricRange,Disposal,Microwave,Refrigerator,TrashCompactor,Washer

---

## Nearby Schools

**Middle Or Junior School:** Gulfstream

**High School:** Hallandale High

**Elementary School:** Gulfstream

---

## Miscellaneous



**List Office Name:**  
BHHS EWM Realty

**Community Features:**

Clubhouse,Fitness,PropertyManagerOnSite,Pool,Sauna

**Direction Faces:**  
East

**Rent Includes:** AssociationDues,Internet,Sewer,CableTv,Water

