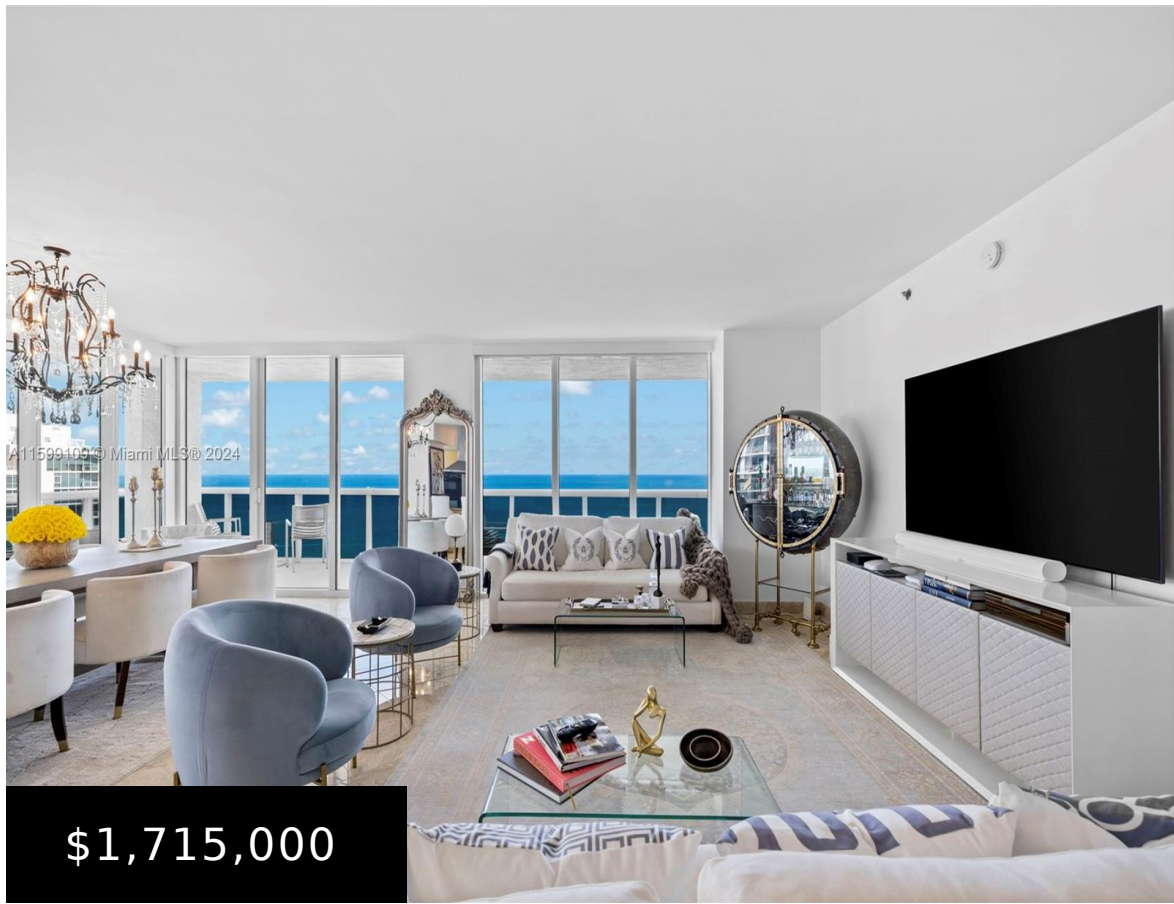


2501, 1800, OCEAN DR, HALLANDALE BEACH, FL, 33009

<https://beachclubhallandale.org>



BEACH CLUB THREE CONDO UNIT 2501 PER CDO CIN# 106720024 The best deal in the Complex for a spectacular corner unit with North-East, Direct Ocean, and Intracoastal views. 3 Bedrooms with 3.5 baths, 2,078 sq. ft. and 468 sq. ft. Wraparound Terrace. The unit has been upgraded. Motorized window treatments, and marble floors throughout. Custom [...]

- 3 beds
- 4 baths
- Condominium
- Residential
- Active
- 2078 sq ft

Basics



Category: Residential

Status: Active

Bathrooms: 4 baths

Floors: 44 floors

Year built: 2006

Subdivision Name: BEACH CLUB THREE CONDO

Type: Condominium

Bedrooms: 3 beds

Half baths: 1 half bath

Area: 2078 sq ft

View: Ocean

County: Broward County

Building Details

Construction Materials: Brick,Block

Garage Spaces: 1

Covered Spaces: 1

Floor covering: Marble

Amenities & Features

Parking Features: OneSpace

Association Amenities: Elevators

Window Features: ImpactGlass

Exterior Features: Other

Interior Features: BedroomonMainLevel,FirstFloorEntry,Elevator

Security Features:

KeyCardEntry

Waterfront Features:

Other

Cooling: CentralAir

Heating: Central

Appliances: Dryer

Nearby Schools

Elementary School: Hallandale Elem

High School: Hallandale High

Expenses, Fees & Taxes

Association Fee: \$923

Tax Year: 2023

Tax Annual Amount: \$26,758



Miscellaneous

Association Fee Frequency: Monthly **List Office Name:** Compass Florida, LLC

Listing Terms: Cash,Conventional

