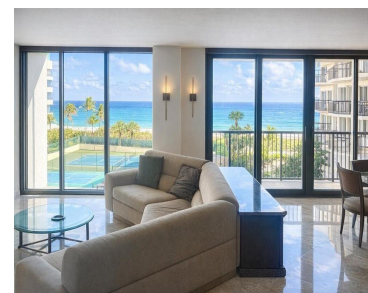
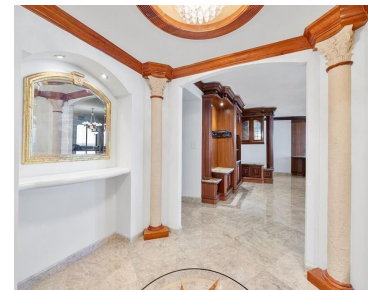
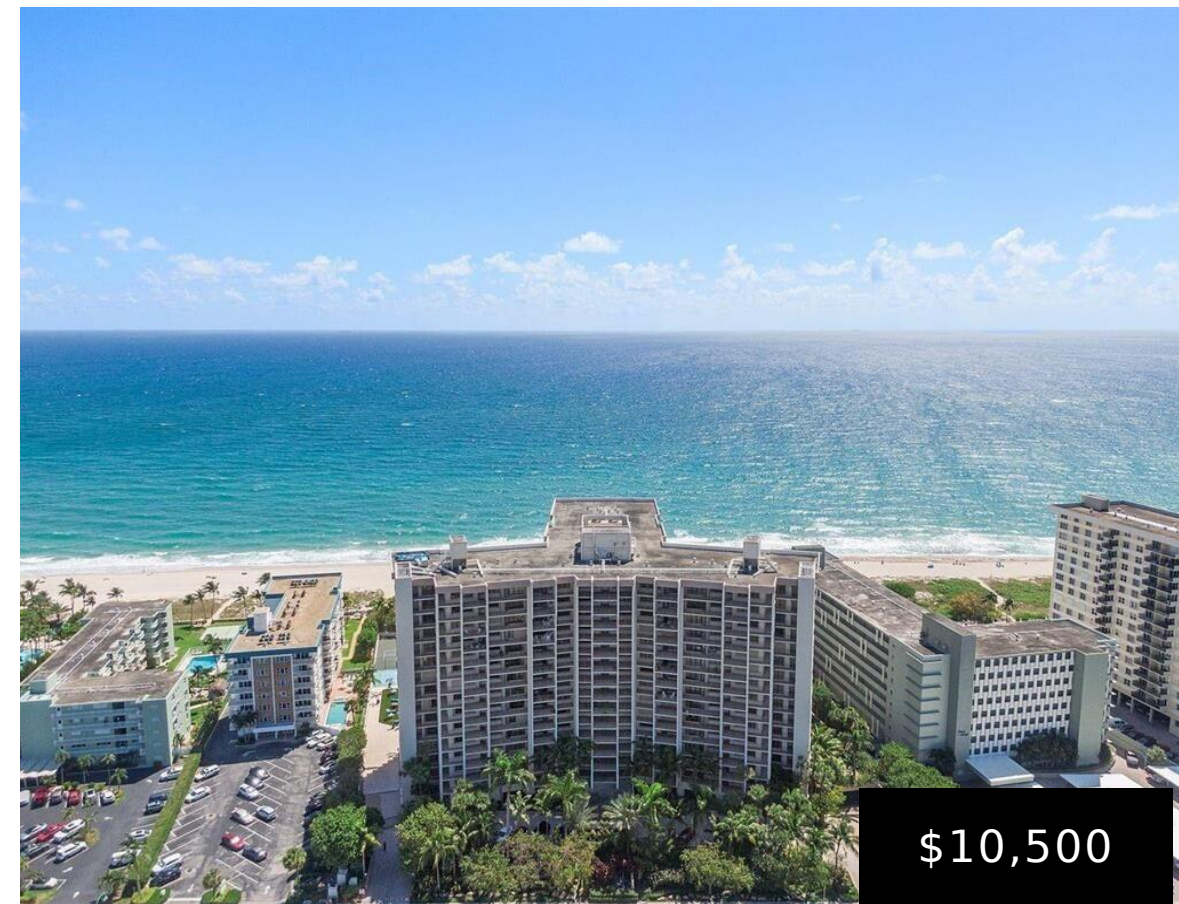


# FL, US, LAUDERDALE BY THE SEA

<https://beachclubhallandale.org>



THE HAMPTON BEACH CLUB CONDO UNIT 410 PER CDO BK/PG: 8988/879 This fabulous condo in Lauderdale by the Sea, feels like a luxurious yacht. Featuring BRAND-NEW IMPACT FLOOR TO CEILING WINDOWS & DOUBLE SLIDERS to enjoy the mesmerizing OCEAN VIEWS.

- 3 beds
- 4 baths
- Condominium
- ResidentialLease
- Active
- 3340 sq ft

## Basics



**Category:** ResidentialLease

**Type:** Condominium

**Status:** Active

**Bedrooms:** 3 beds

**Bathrooms:** 4 baths

**Half baths:** 1 half bath

**Total rooms:** 1

**Floors:** 15, 15 floors

**Area:** 3340 sq ft

**Year built:** 1980

**View:** Garden,Ocean,TennisCourt

**Subdivision Name:** HAMPTON BEACH CLUB CONDO

**County:** Broward

---

## Building Details

**Building Name:** HAMPTON BEACH CLUB

**Architectural Style:** HighRise

**Sewer:** PublicSewer

**Construction Materials:** Block

**Covered Spaces:** 1

**Garage Spaces:** 1

**Floor covering:** Hardwood, Marble, Wood

---

## Amenities & Features

**Pool Features:** None,Association,Community,Heated

**Parking Features:** Assigned,Attached,Covered,Garage,Guest,OneSpace,TwoOrMoreSpaces

**Security Features:** SecuredGarageParking,LobbySecured,SecurityGuard,SecuritySystem,FireSprinklerSystem,SmokeDetectors

**Patio & Porch Features:** Balcony,Open

**Accessibility Features:** AccessibleEntrance

**Parking Total:** 3

**Roof:** Other

**Association Amenities:** Clubhouse,Elevators,FitnessCenter,Management,Pool,Sauna,TennisCourts

**Utilities:** CableAvailable

**Cooling:** CentralAir,Electric

**Exterior Features:** Balcony,Barbecue,Lighting,OutdoorShower,Other,TennisCourts

**Furnished:** Furnished

**Heating:** Central,Electric

**Interior Features:** BuiltInFeatures,ClosetCabinetry,KitchenIsland,MainLivingAreaEntryLevel,WalkInClosets,Elevator

**Appliances:** Dryer,Dishwasher,ElectricRange,ElectricWaterHeater,Disposal,Microwave,Refrigerator,Washer

---

## Nearby Schools

**Middle Or Junior School:** Pompano B.Middle

**Elementary School:** Mcnab

**High School:** Northeast

---

## Miscellaneous



**List Office****Name:**

Coldwell

Banker Realty

**Community Features:**

Clubhouse,Fitness,PropertyManagerOnSite,Sauna,Pool,TennisCourts

**Direction****Faces:** East**Rent Includes:**

AssociationDues,Gardener,Internet,Pool,Sewer,TrashCollection,Water

