

EAST EDGEWATER, FL, MIAMI

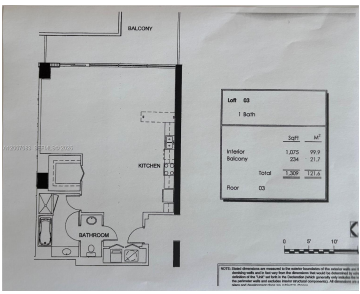
<https://beachclubhallandale.org>



A12007083 SEFMLS© 2026

\$549,000

1800 CLUB CONDO UNIT 303 UNDIV 0.184997% INT IN COMMON ELEMENTS
OFF REC 26060-2296 COC 26206-3784 01 2008 1 NO RENTAL
RESTRICTIONS!!!! LIVE/WORK LOFT SPACE W/12 FOOT CEILINGS & FLOOR-
TO-CEILING WINDOWS LOCATED IN THE 1800 CLUB IN THE HEART OF
EDGEWATER!!!! SPECTACULAR DIRECT EAST WITH 1075 SQFT FT OF AC
SPACE + 234 SQFT IN [...]



Room	Sqft	Sqft
Interior	1,075	999
Balcony	234	234
Floor	1,309	1,233



- 1 bed
- 2 baths
- Condominium
- Residential
- Active
- 1075 sq ft

Basics



Category: Residential

Status: Active

Bathrooms: 2 baths

Floors: 42 floors

Year built: 2007

View: Bay

County: Miami-Dade

Type: Condominium

Bedrooms: 1 bed

Half baths: 0 half baths

Area: 1075 sq ft

Property Condition: UpdatedRemodeled

Subdivision Name: 1800 CLUB CONDO

Building Details

Architectural Style: HighRise

Covered Spaces: 1

Floor covering: CeramicTile, Marble

Construction Materials: Block

Garage Spaces: 1

Amenities & Features

Pool Features: Association,Heated

Security Features: DoorMan,KeyCardEntry,LobbySecured,FireSprinklerSystem,SmokeDetectors

Association Amenities:

BasketballCourt,BilliardRoom,BikeStorage,FitnessCenter,Pool,Sauna,SpaHotTub,Storage,TennisCourts,Trails

Utilities: CableAvailable

Exterior Features: Balcony,TennisCourts

Interior Features:

BedroomOnMainLevel,EntranceFoyer,GardenTubRomanTub,HighCeilings,LivingDiningRoom,SeparateShower,WalkInClosets

Parking Features: Covered,OneSpace,Valet

Patio & Porch Features: Balcony,Open

Waterfront Features: Bayfront

Cooling: CentralAir,Electric

Heating: Central,Electric

Appliances:

BuiltInOven,Dryer,Dishwasher,ElectricRange,ElectricWaterHeater,Disposal,Microwave,Refrigerator,SelfCleaningOven,Washer

Expenses, Fees & Taxes

Association Fee: \$845

Tax Year: 2025

Tax Annual Amount: \$5,678

Miscellaneous

Association Fee Frequency: Monthly **List Office Name:** Robles International Realty

Listing Terms: Cash,Conventional

