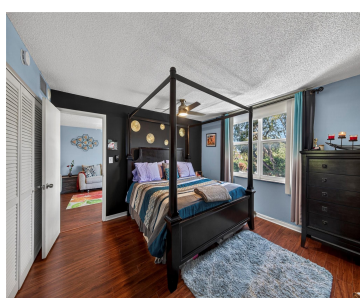


FL, US, FORT LAUDERDALE

<https://beachclubhallandale.org>



\$250,000



DRAKE TOWER CONDO UNIT 2F PER CDO BK/PG: 7955/495 Beautiful corner 2BR/2BA at Drake Tower Condos in a well-maintained community. Recent upgrades include a renovated pool and sun deck. Monthly maintenance covers water, cable, internet, and pest control. Secure building with fob entry, video call box, gated parking, and a resident room. Laundry on each [...]

- 2 beds
- 2 baths
- Condominium
- Residential
- Active
- 980 sq ft

Basics



Category: Residential

Status: Active

Bathrooms: 2 baths

Total rooms: 2

Area: 980 sq ft

View: Garden,Other,Water

County: Broward

Type: Condominium

Bedrooms: 2 beds

Half baths: 0 half baths

Floors: 12, 12 floors

Year built: 1975

Subdivision Name: Drake Tower

Building Details

Structure Type: MultiFamily

Construction Materials: Block

Floor covering: Hardwood, Tile, Wood

Amenities & Features

Pool Features: Association,Community

Security Features: Intercom,KeyCardEntry,LobbySecured,PhoneEntry,SecuritySystem,SmokeDetectors

Association Amenities:

BikeStorage,Clubhouse,ControlledAccess,Barbecue,PicnicArea,Pool,Storage,Trash,VehicleWashArea,Elevators

Window Features: Blinds,Drapes

Exterior Features: Balcony,Barbecue,Courtyard

Heating: Central,Electric

Appliances: Dishwasher,ElectricRange,ElectricWaterHeater,Freezer,Disposal,Microwave,Refrigerator

Parking Features: TwoOrMoreSpaces

Patio & Porch Features: Balcony,Open

Utilities: CableAvailable

Cooling: CentralAir,CeilingFans,Electric

Furnished: Unfurnished

Interior Features:

BedroomOnMainLevel,Bathub,FamilyDiningRoom,LivingDiningRoom,MainLivingAreaEntryLevel,SplitBedrooms,Elevator

Expenses, Fees & Taxes

Association Fee: \$930

Tax Annual Amount: \$2,819

Tax Year: 2025

Miscellaneous

Association Fee Frequency: Monthly

List Office Name: Better Homes & Gdns RE Fla 1st

Listing Terms: Cash,Conventional

Community Features: Park,Pool

Direction Faces: East

Rent Includes: Internet

